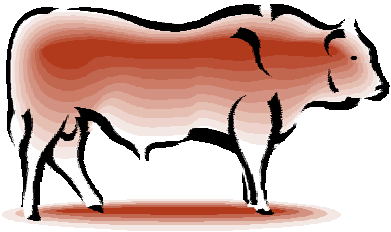


# Morrison County Open Beef Competition

Morrison County Fairgrounds  
Little Falls, MN

July 17, 2010 10 a.m.



Entry Fee \$10, postmarked by July 10<sup>th</sup>

## General Information:

This is replacing our open class show from years past.

Check in options: Wednesday for the duration of the fair,

Friday after 4:00 p.m.

Day of show 8 a.m., for showing out of trailer

Show will start @ 10am on Saturday.

Parking for trailers will be available.

Classes will be broken down at the time of the show.

Heifers will be shown by breed class, providing there are 5 or more to represent that breed.

Overall champion from each breed division will compete for Supreme Overall Breeding Animal.

Steers/Dairy Steers/Market Heifers will be shown together.

Bulls may be shown up to 24 months of age.

After 12 months a bull ring is required.

If you are bringing a bull, please mark that on the registration form.

We are not requiring TB paper for this show.

NO generators in the barn.

All generators and power cords must be OSHA approved.

Remember to mark what county you would like to represent for the Bronze Boot Competition.



**Bronze Boot Competition:** A friendly competition between Morrison and Benton County and you can join in too! Just check which county you would like to help support and your winnings will go towards the total points at the end of the show. Whichever county (Morrison/Benton) wins gets the bronze boot for the year! For more information contact Clint Kathrein or Dar Giess – (320) 249-2130

Entry Forms are available at: [www.morrisoncountyfairlittlefalls.com](http://www.morrisoncountyfairlittlefalls.com)

For any additional information contact: Open Beef Competition Committee members

Dar Giess – (320) 249-2130

Alice Coudron – (763) 268-2735

Aaron Goulet – (320) 333-9020

Allen & Anna Lyon – (320) 387-2794



# Morrison County Open Beef Competition

Morrison County Fairgrounds  
Little Falls, MN

July 17, 2010 10 a.m.

Compete in the Morrison-Benton  
Bronze Boot Competition



**Mail Entries to:**  
MC Open Beef Competition  
FairBoard Office  
PO Box 177  
Little Falls, MN 56345

## General Information:

This is replacing our open class show from years past.  
Check in options: Wednesday for the duration of the fair,  
Friday after 4:00 p.m.  
Day of show 8 a.m., for showing out of trailer

Parking for trailers will be available.

Classes will be broken down at the time of the show.

Heifers will be shown by breed class, providing there are 5 or more to represent that breed.

Overall champion from each breed division will compete for Supreme Overall Breeding Animal.

Steers/Dairy Steers/Market Heifers will be shown together.

Bulls may be shown up to 24 months of age.

After 12 months a bull ring is required.

If you are bringing a bull, please mark that on the registration form.

We are not requiring TB paper for this show.

NO generators in the barn.

All generators and power cords must be OSHA approved.

**Remember to mark what county you would like to represent for the Bronze Boot Competition.**

Entry forms are available at: [www.morrisoncountyfairlittlefalls.com](http://www.morrisoncountyfairlittlefalls.com)

For any additional information contact: **Open Beef Competition Committee members**

**Dar Giess – (320) 249-2130**

**Alice Coudron – (763) 268-2735**

**Aaron Goulet – (320) 333-9020**

**Allen & Anna Lyon – (320) 387-2794**

**NOT RESPONSIBLE FOR ACCIDENTS OR LOST OR STOLEN ITEMS**

Detach here and return to MC Open Beef Competition, Fairgrounds, PO Box 177, Little Falls, MN 56345

Exhibitor Name \_\_\_\_\_

Address \_\_\_\_\_ City \_\_\_\_\_ State \_\_\_\_\_ Zip \_\_\_\_\_ Phone \_\_\_\_\_

\*Animal Name: \_\_\_\_\_ DOB: \_\_\_\_\_ Breed: \_\_\_\_\_ Reg#: \_\_\_\_\_

Check: Morrison  Benton  Breeding Heifer  Market Heifer  Beef Steer  Dairy Steer

Exhibitor Name \_\_\_\_\_

Address \_\_\_\_\_ City \_\_\_\_\_ State \_\_\_\_\_ Zip \_\_\_\_\_ Phone \_\_\_\_\_

\*Animal Name: \_\_\_\_\_ DOB: \_\_\_\_\_ Breed: \_\_\_\_\_ Reg#: \_\_\_\_\_

Check: Morrison  Benton  Breeding Heifer  Market Heifer  Beef Steer  Dairy Steer